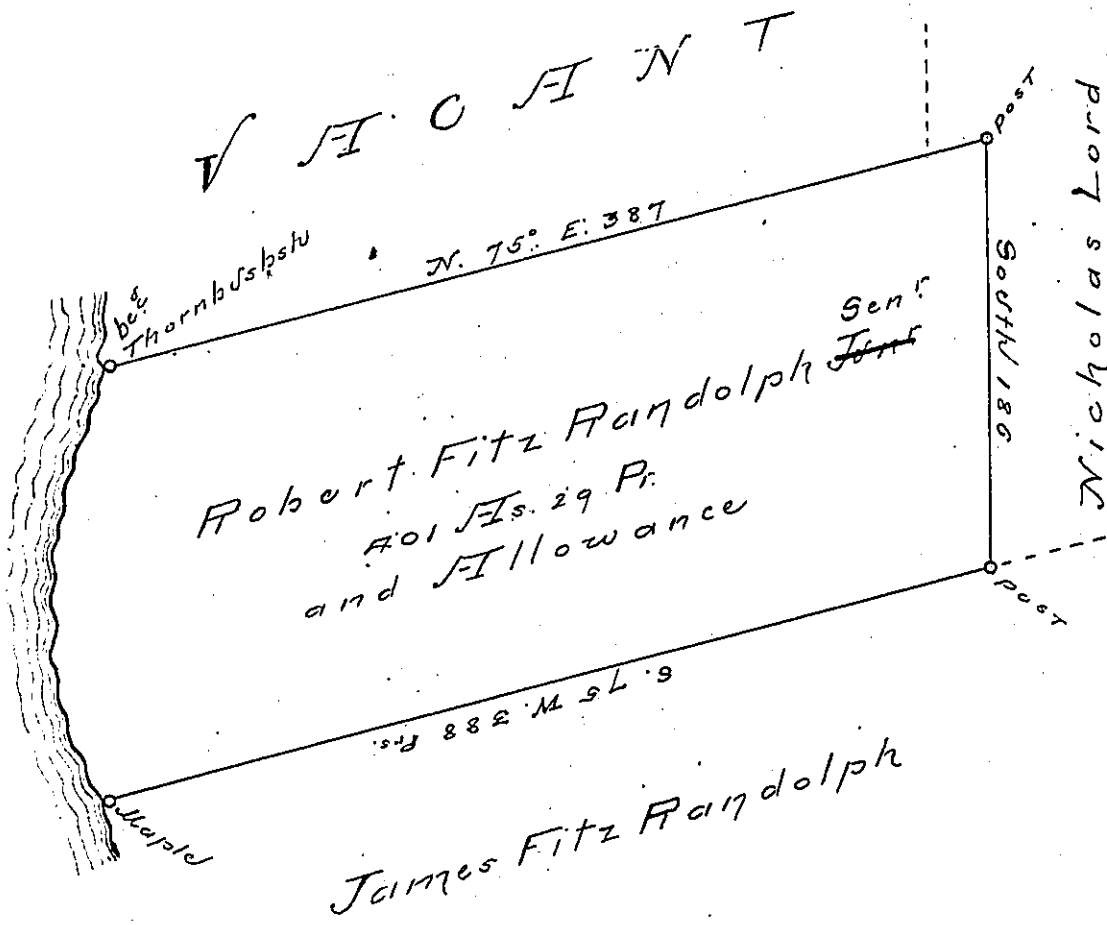


River Courses
 Beg^d Thornbush
 S. 17° W. 63
 S. 8° W. 17
 South 24
 S. 6 1/2° E. 40
 S. 18° E. 57
 201 ps.



Situated in Allegheny County on the East side
 French Creek containing four hundred and one
 acre and twenty nine perches and allowance of six
 Pr. cont^d &c.

Surveyed the 8th day of May 1779 - In pursu-
 ance of his improvement.

To
 Daniel Rodhead Esq^r } Wm^m Power Esq^r
 Surveyor General }

IN TESTIMONY that the above is a copy of the original remaining on file in the
 Department of Internal Affairs of Pennsylvania, made con-
 formably to an Act of Assembly approved the 16th day of
 February, 1833, I have hereunto set my Hand and caused
 the Seal of said Department to be affixed at Harrisburg, this
 twentieth day of February 1895.

Isaac R. Brown
 Secretary of Internal Affairs.